



Patricia Hughes

February 26, 1937 - November 26, 2012

Patricia A. Hughes, 75 years 9 months, of Bradenton, Florida passed away peacefully on November 26, 2012.

She was born February 26, 1937 in New York, New York the daughter of John and Rose (Cotter) Simkovic.

Patricia retired from the State of New York after 36 years of service, and relocated to the state of Florida to enjoy her retirement in 1989 with her loving husband and youngest daughter.

Patricia enjoyed her nights at Bingo, and using her craft to make dolls, which she had a fairly abundant collection of.

She leaves to cherish her loving memory, her husband Walter Hughes, sister Marie Cameron, 5 children, Diane Euler, Raymond Cronin, Kenneth Cronin, Michael Cronin, and Victoria Hughes, 5 grandchildren, and 3 great grandchildren.

Tribute Wall



“ *Patricia Hughes*

October 09, 2023 at 02:01 AM



“ *Patricia Hughes*

January 28, 2023 at 12:09 PM

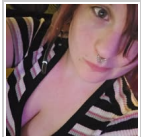


“ *Mom*
I feel you looking over me from time to time
You are forever missed

#1 Son Ray

November 20, 2016

Raymond Cronin - November 20, 2016 at 02:08 PM



“ *I miss you a lot a granny I wish you were still here to met my daughter. You would think that she is the most perfect baby you ever met*

Jammie Newsom - May 14, 2015 at 07:33 PM



“ *Jammie: I miss her more and more each day I love her soo much.*

Jon: I didn't really get the chance to know her that well but when I did meet her she seemed very sweet. All my regards to the family.

Jammie Ely & Jon Newsom - April 06, 2013 at 12:00 AM

#R

“ Mom,
I will miss the 45 min.phone conversations that we had to catch up
on all the goings on!
With your passing you have brought your family a little closer
together, and there will not be a day that goes by that you are not in
my thoughts.
I love you and miss you greatly! xoxo

#1 Son Raymond - December 07, 2012 at 12:00 AM

CL

“ My thoughts and prayers are with each and every one of you during
this time of incredible pain. Try each day to think of one special
happy moment that you shared with Pat. She will be with you during
these times of remembrance.

Cathy Leone - December 04, 2012 at 12:00 AM

JE

“ My grandma was a great woman. I love and miss her so much.

Jeremy Ely - December 02, 2012 at 12:00 AM

PG

“ *Patty was my neighbor directly across the street and I first met Patty and Walter when they looked at their home for the first time.*

I will always remember Patty "up and about" early in the morning taking her grandchildren to school in the RV.

My deepest sympathy to the entire Hughes family and friends over the passing of Patty.

*With heartfelt condolences,
Patty*

Patty Giantomenico - December 02, 2012 at 12:00 AM

MC

“ *Mom you were an exceptionally strong woman. You will be missed. Keep watch over us. We love you.*

Mike and Carol Cronin - December 02, 2012 at 12:00 AM

BC

“ I will miss my wonderful Aunt who was always giving of herself to her family. Whenever she smiled her entire face would light up, which brought joy to all in her immediate vicinity. This world needs more giving people like her. She lived Proverbs 31:25-29 Which states:

25 She is clothed with strength and dignity; she can laugh at the days to come.

26 She speaks with wisdom, and faithful instruction is on her tongue.

27 She watches over the affairs of her household and does not eat the bread of idleness.

28 Her children arise and call her blessed; her husband also, and he praises her:

29 "Many women do noble things, but you surpass them all."

Bob Cameron - December 02, 2012 at 12:00 AM



“ A sympathy card has been sent to a friend or relative of Patricia A. Hughes.

December 02, 2012 at 12:00 AM

MC

“ Sending my love from New Paltz, N.Y. Granny, I miss and love you.

Matthew Cronin - December 02, 2012 at 12:00 AM

M(

“ my sister was a great sister and friend. We became closer as we aged. I will miss our telephone calls ,as we resided in different states. I am grateful we were able to get together 2 years ago at Disneyland in Fla.

marie cameron (simkovic) - December 01, 2012 at 12:00 AM



“ *A sympathy card has been sent to the family of Patricia A. Hughes.*

December 01, 2012 at 12:00 AM